

ENHANCING YOUTH PARTICIPATION IN THE DEVELOPMENT CROWD SOURCE SPATIAL DATA FOR SUPPORT SAFE AND SECURE CITIES



BANDUNG CITY , WEST JAVA

The open mapping initiative, conducted from March 2022 to June 2023, is a collaboration involving WRI Indonesia, GERAJ, ICLEI, and the City Government of Bandung. The objective of the S2Cities Digital Map project is to promote a sustainable and secure urban environment in Bandung by enhancing the capabilities of the youth. The program aims to instill awareness among the youth to realize a secure and comfortable Bandung.

The project focus on young people (15-24 years old) especially youth from low-income households in Bandung. Under the Botnar Foundation grant, WRI and POI to facilitate access for dialogue, co-ideation and promote innovative solutions of young people to create a safe and sound city also well-being of young people in urban environment; particularly those related to solutions to reduce urban heat effects, improve air pollution, lower emission and improve traffic safety.



Activity 1

Stakeholder mapping and analyses to identify key actors and build influencing strategy within Bandung



Activity 2

Information Ecosystem Assessment to identify needs and impact perception on key factors forming the local urban safety



Activity 3

Hackaton/competition-based events in soliciting innovative ideas and conducting small research by the youth to improve urban safety and how to enhance the role of youth to craft and implement innovative solutions to improve urban safety

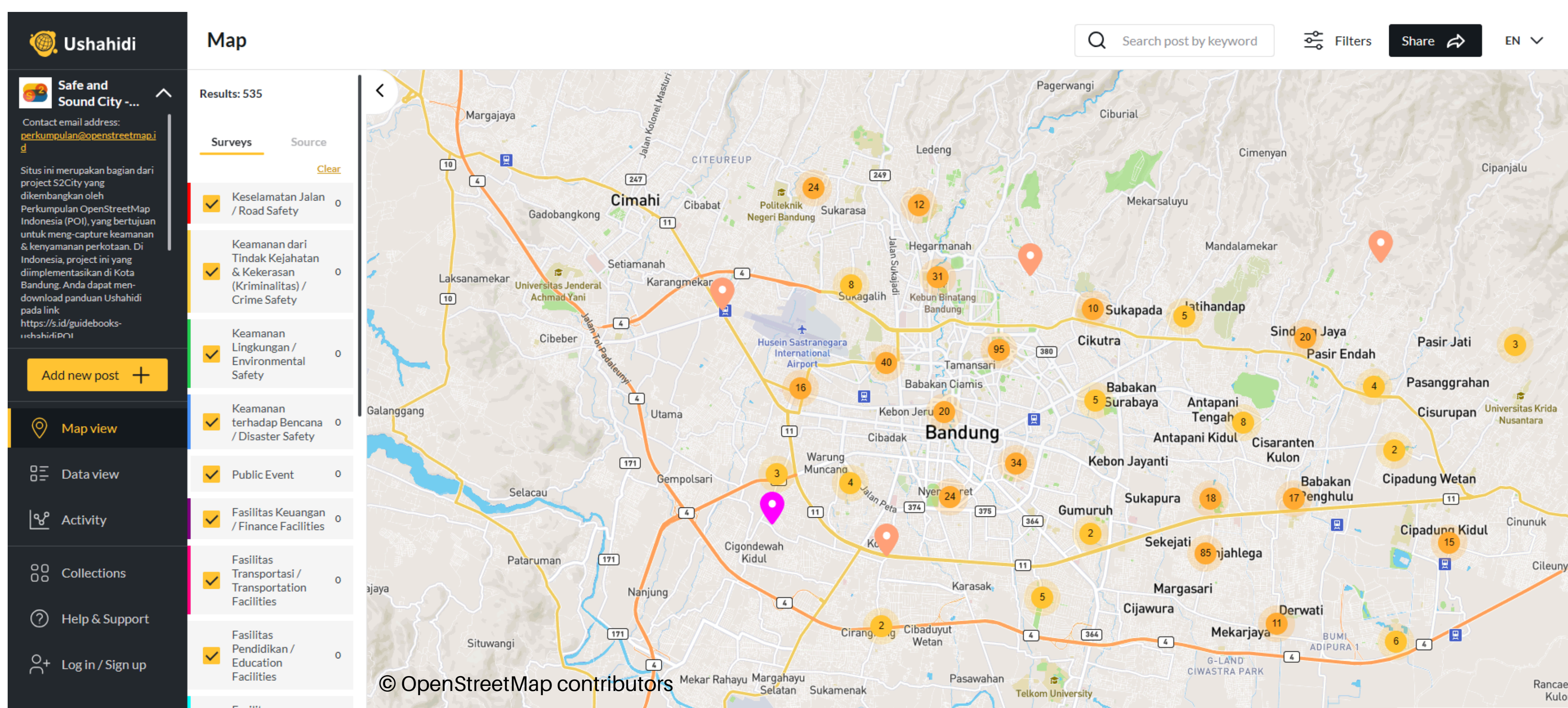
More than 2,000 reports have been documented on the OSM & Ushahidi platform. 60 youth communities involved in the project implementation

Perkumpulan OpenStreetMap Indonesia's primary role is to foster the development of skills and ideas among the youth, empowering them to contribute to creating a secure and comfortable city in Bandung. The project includes various sub-activities such as training, data collection, the establishment of a monitoring platform using Ushahidi, and the development of a webGIS to visualize the analysis of the project's outcomes.

Field Events Report



<https://s2city-bandung.ushahidi.io/views/map>



Facilities Report 1453

